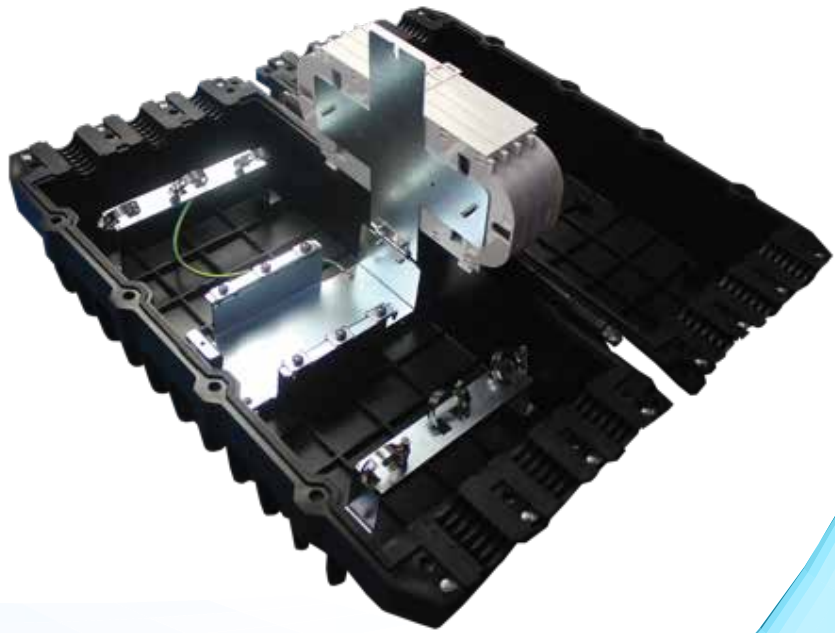




Fibre Optic Splice Closure



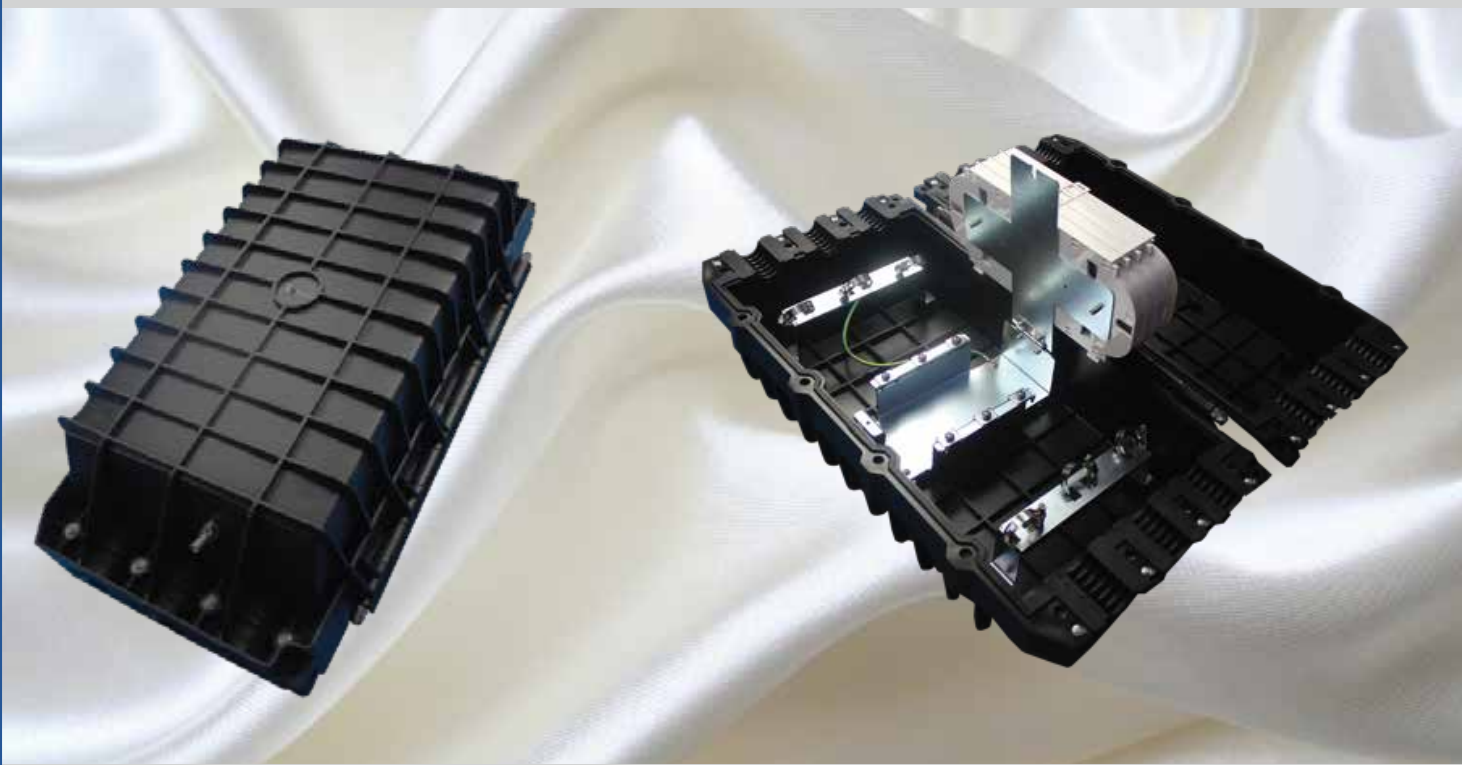
DATA SHEET

☎ +44 20 8895 6455
✉ info@webbinfra.com
🌐 www.webbinfra.com

Fibre Optic Inline Closure C.05.JC-L.119

Joint closures are a range of products primarily used for joining cables. Joints in cables are a practical reality with the increase in distances that data needs to be transmitted. The primary function of a fibre optic joint closure is to protect the fibre joints from any physical damage.

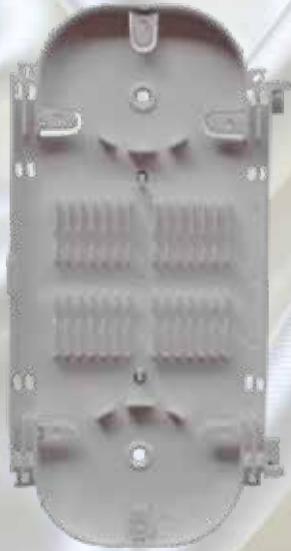
Webb joint closures are made of high corrosion resistant polycarbonate material with heavy duty IP 68 delivering synthetic gaskets for total ingress protection. Our production treatments make our units UV resistant and waterproof. Every cable entry has high quality cable sealing plugs to maintain IP 68 ratings.



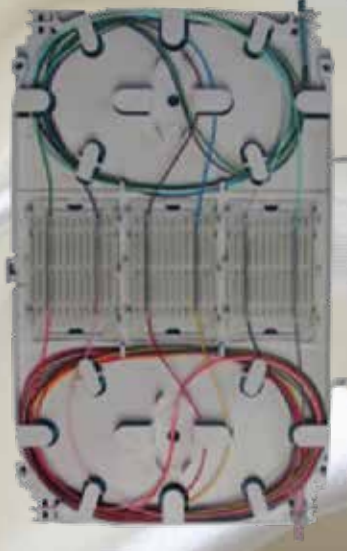
Applications

- Duct
- Aerial
- Wall mounting

**Specifications are subject to change without notice based on technical recommendations and related product enhancements*



Tray X2 C.05.JC-L.119A



Tray X5 C.05.JC-L.119B



Features

- Recyclable and suitable for re-entry
- Can be utilized for notched, closed & rigid sheath platforms
- Suitable for the entire range of fibre optic cables
- Corrugated closure and light-weight plastic delivers robustness and resistance to chemical and UV degradation.
- Inclusive of sheath conservation and central strength member fasten feature
- Requires only base level usage of tools during installation & re-entry
- Inclusive of the entire range of hardware
- Protection category: IP68
- RoHS compliance

**Specifications are subject to change without notice based on technical recommendations and related product enhancements*

Specifications

Part number	Spliced fibre storage capacity	Size(mm) L x W x H	Cable ports	Cable ports
C.05.JC-L.119A	192 splices (8 x 24 splices)	500mm x 270mm x 194mm	Design 1: 2 ports for 1 cable with max dia 20 mm, 2 ports for 22mm and 2 ports for 25mm. Design 2: 2 ports for 1 cable with max dia 22 mm, 2 ports for 25mm and 2 ports for 30mm.	6 ports
C.05.JC-L.119B	432 splices (12 x 36 splices)			

**Specifications are subject to change without notice based on technical recommendations and related product enhancements*